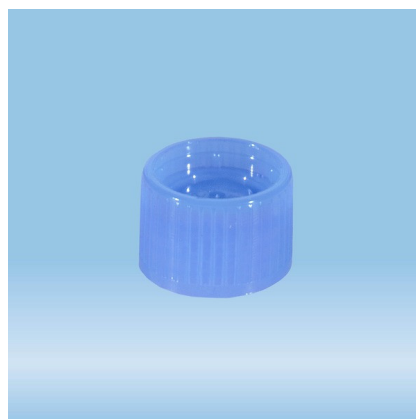




Product specification

Screw cap, blue, suitable for tubes Ø 15.3 mm



Product information

Product number	65.729.005
----------------	------------

Product descriptions

Name	Screw cap, blue, suitable for Tubes Ø 15.3 mm
Product number	65.729.005
Product description	Screw cap, blue, suitable for tubes Ø 15.3 mm, 100 piece(s)/bag

Material & colours

Product material	High Density Polyethylene (HD-PE)
Color of product	blue

Product characteristics

Closure type	Screw cap
--------------	-----------

Purity & certification

Product category	no medical device IVD
Batched	yes

Packaging

Minimum order quantity	5000
Piece(s) / inner box	100
Piece(s) / case	5000

Piece(s) / pallet	180000
Volume of case	0.0492 cbm
Weight of case	5.48 kg
EAN inner box	4038917234016
EAN case	4038917234009

This is the current specification for this product. Sarstedt reserves the right to make changes, in full or in part, at any time without prior notification.

This specification is confidential and the property of Sarstedt. It is neither to be duplicated nor made available to third parties without our prior written consent.

This document was prepared by EDP support and is valid without signature.



SARSTEDT